

Current Development Projects

Edina Flats:

4404 & 4416 Valley View Road. 6108, 6112, 6116 & 6120 Kellogg Avenue, Edina, MN

Edina Flats, LLC is requesting a Comprehensive Plan Amendment, Preliminary Rezoning & a Conditional Use Permit to build 18-units of owner occupied housing. The Comprehensive Plan Amendment expands the Neighborhood Commercial District and the Preliminary Rezoning is from R-1, Single Dwelling Unit District, PCD-4, Planned Commercial District-4, & APD to Planned Commercial District - I.

Schematics:



5/17/2017

esg

PLANNING DEPARTMENT
AUG 25 2017
CITY OF EDINA

Edina Flats
Edina, MN

STREET VIEW - ALONG
KELLOGG AVE



5/17/2017

esg

Edina Flats
Edina, MN

STREET VIEW - CORNER OF
OAKLAWN AND VALLEY VIEW



5/17/2017

esg

Edina Flats
Edina, MN

BUILDING #3



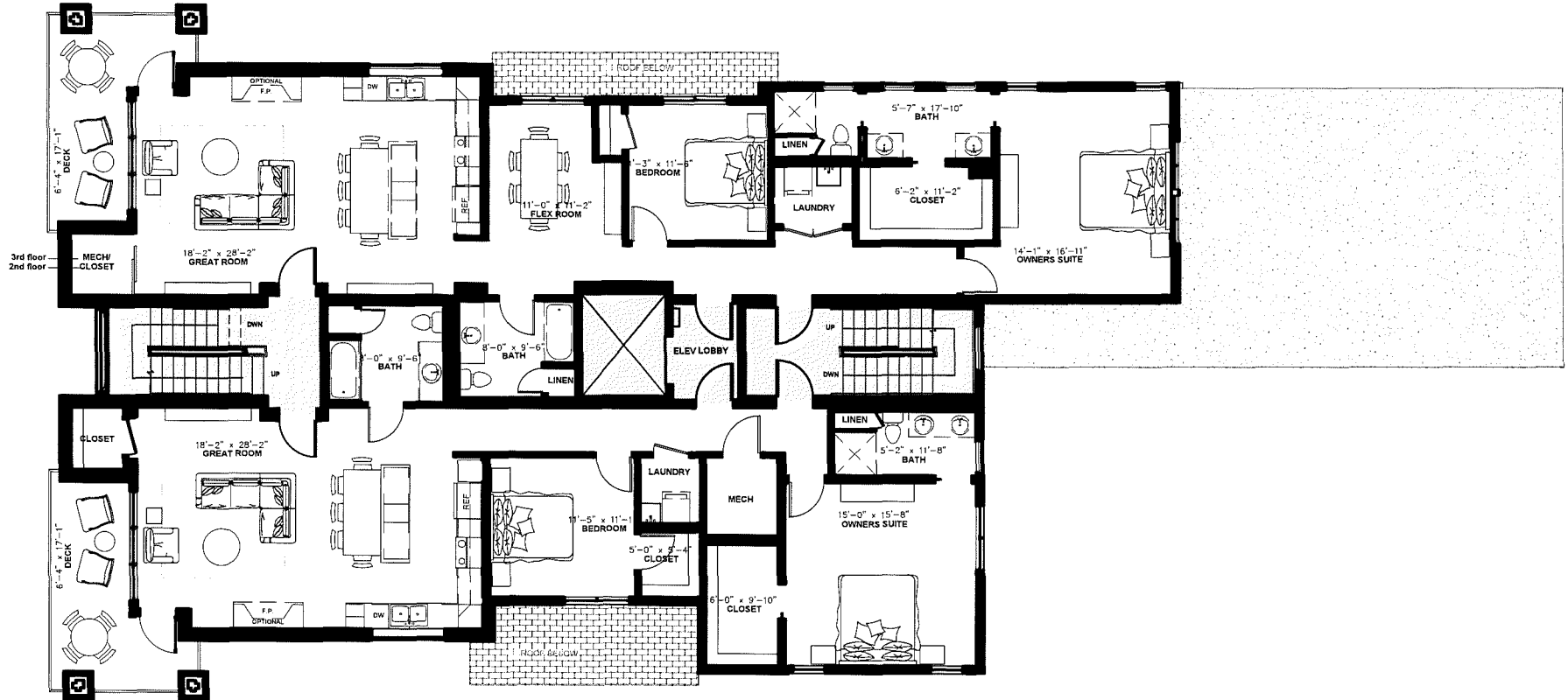
5/19/2017



Edina Flats
Edina, MN

SITE PLAN

Isles Plan: 1520 sf



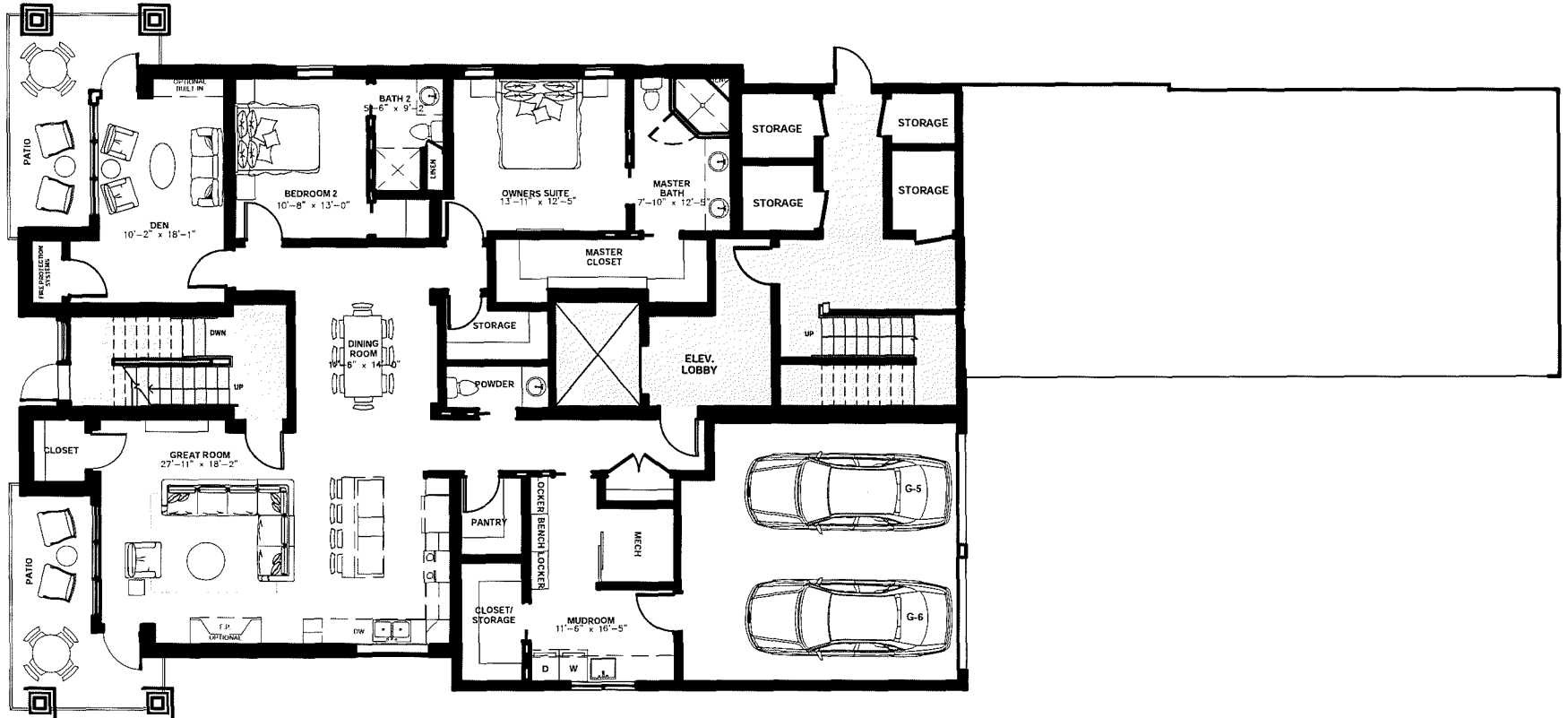
Harriet Plan: 1350 sf

Second Floor

0' 4' 8' Dimensions Approximate

Edina Flats
Edina, MN

Calhoun Plan: 2000 sf



First Floor

Edina Flats
Edina, MN

0' 4' 8' Dimensions Approximate

Nokomis: 2,345 sf



Cedar Plan @ 1: 2,321 sf

Cedar II Plan @ 2-3: 2,402 sf


First-Third Floors

 Dimensions Approximate

Edina Flats
Edina, MN



Below Grade Parking

 Dimensions Approximate

Edina Flats

Edina, MN