



The CITY of
EDINA

Arden Park Shelter

City Council Meeting
Feb. 5, 2019



The CITY of
EDINA

Outline

- Background information on approvals from City Council
- Park shelter design
- Construction estimates vs. actual bid
- Funding sources and project costs
- Next steps and project timeline
- Action requested
 - Approve request for purchase and award base bid and bid alternate



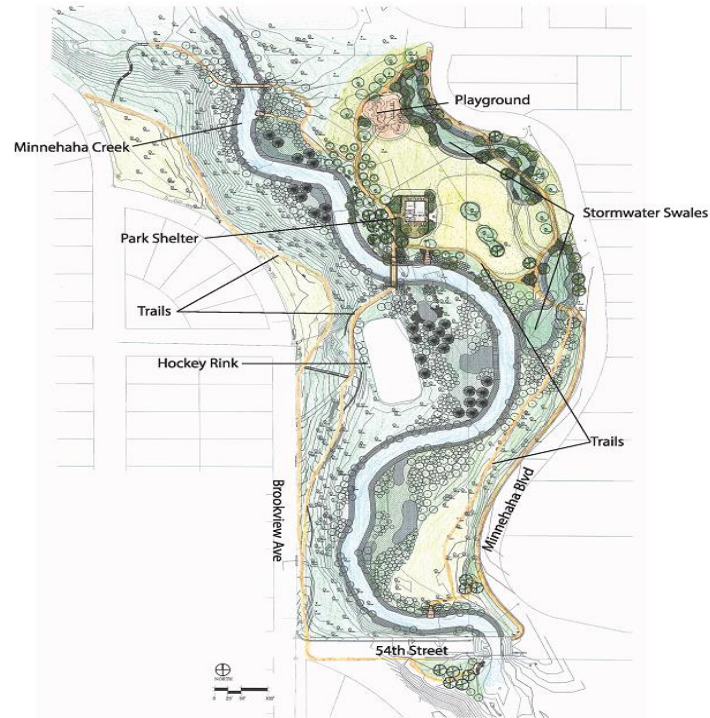
Information/Background

- Oct. 2, 2018 – Approved shelter design option 4C. 90% design check in and authorize to bid phase I
- Nov. 20, 2018 – Authorize MCWD to award bid phase I
- Dec. 18, 2018 – Authorize the advertisement of bid shelter building

Site Plan



The CITY of
EDINA



Shelter Design



The CITY of
EDINA



ARDEN PARK - NEW SHELTER BUILDING



Exterior



The CITY of
EDINA

ARDEN PARK - SHELTER BUILDING
EXTERIOR VIEW

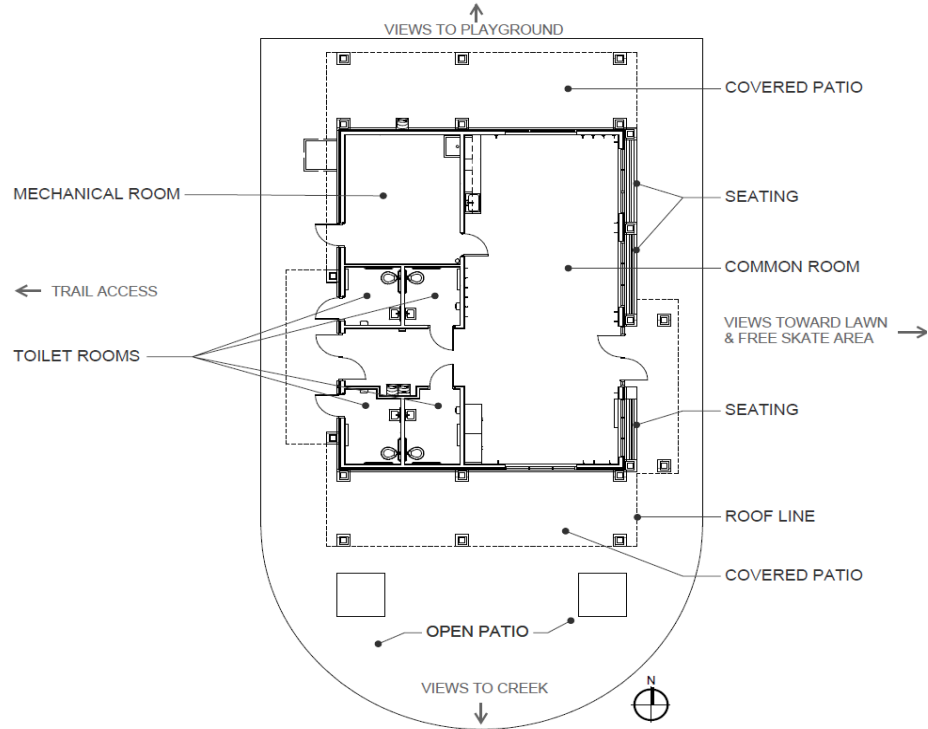
- ASPHALT SHINGLES
- WOOD STRUCTURE
- STONE VENEER
- PATIO



Floor Plan



The CITY of
EDINA



Interior



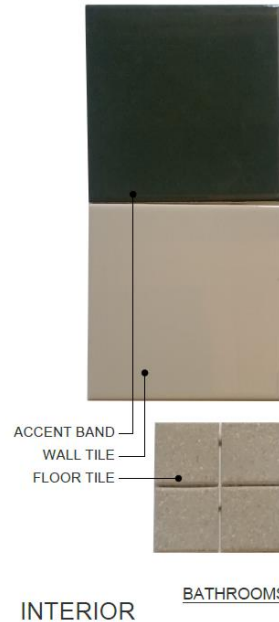
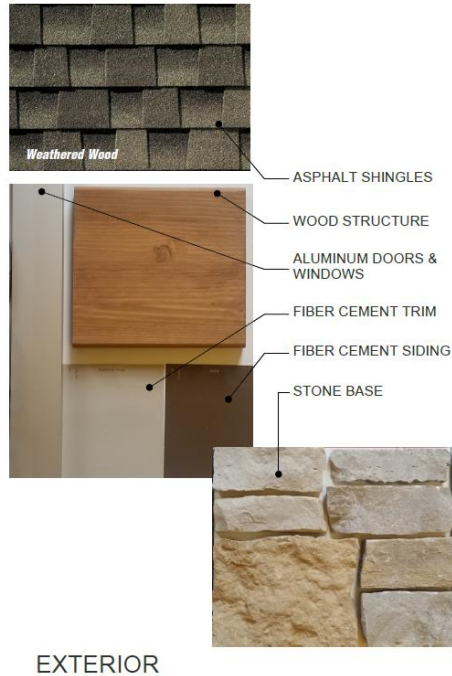
The CITY of
EDINA

ARDEN PARK - SHELTER BUILDING
INTERIOR VIEW

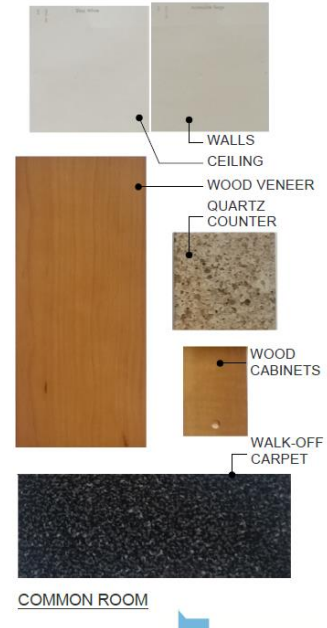




Exterior/Interior Materials



ARDEN PARK - SHELTER BUILDING
MATERIALS





Construction Estimates vs. Actual Bid

12/18/18

	Estimate	Actual	Difference
Shelter	\$825,000	\$841,700	\$16,700
Security Camera/ Card Access	not included	*\$36,000	\$36,000
Rink Lighting	\$104,000	\$110,000	\$6,000
Trail Lighting	not included	*\$63,500	\$63,500
Total	\$929,000	\$1,051,200	\$122,200

*Total = \$99,500 (project estimate \$22,700 under actual bid. 2% over the estimate.)



The CITY of
EDINA

Funding Source/Project Costs

- Construction Fund \$1,070,600
- Park Dedication \$930,300
- PACS Fund \$358,700
- Utility Fund \$632,810
- **Total Funding: \$2,992,410**
- Bid Package 1 (city cost)\$1,619,259
- Bid Package 2 \$1,051,200
- Playground \$120,000
- Total \$2,790,459
- Budget \$2,992,410
- **Under budget (contingency budget) \$201,951**

Next Steps



The CITY of
EDINA

- Feb. 5, 2019 City Council consideration of bid award
- March Request for Purchase playground
- April–November Construction of shelter building and playground



Overall Project Timeline

- December 2018 – Erosion control, mobilization, marking trees for removal.
- January–March 2019 - Tree removal and demolition of park shelter, pedestrian bridge and dam. Re-meander creek, installing utilities and storm water management features.
- April–June 2019 – Trail and start of park facilities construction (shelter building).
- May–November 2019 - Landscaping, final creek restoration, construction of playground and finish shelter building.



The CITY of
EDINA

QUESTIONS?



The CITY of
EDINA

Communication Plan

- **Current communications**
 - Website (City and MCWD)
 - Email list serve (construction start, what to expect, general construction schedule, contact information)
 - Coming soon signage
 - Press release
 - Drone footage and video or early construction
 - Social media



The CITY of
EDINA

Daylight Modeling

