



The CITY of
EDINA

2016 State of the Infrastructure Report

May 3, 2016

City Council Workshop Presentation



The CITY of
EDINA

Infrastructure outreach?

- **Central to Modern Life:** Public Works and the services they provide are fundamental to our modern life, health and safety.
- **Make the invisible, visible:** while we can see some surficial infrastructure, the majority of infrastructure that makes up these public works are largely invisible or not fully understood by the public.
- **Re-imagination and Renewal:** Raise public understanding and appreciation of public works and the efforts that are taking place to renew and reimagine the role of public works in daily life.

Agenda - Information



The CITY of
EDINA

- System overview
- Concepts and trends
- 2015 accomplishments and 2016 initiatives
- Future Challenges

Where we've been



The CITY of
EDINA

What we said

- Planning for growth (2014 State of the Utilities)
- Integrated project decision making (2015 state of the streets)
- Aging infrastructure, trend data, asset management approach (2015 state of the utilities)

What we did

- Identified funding, kickoff planning for sanitary and stormwater
- Finalized Living Streets policy and network plans, target highest priority
- Technology hardware investment, mobile applications, citizen request application

System Overview



The CITY of
EDINA

- Road miles
 - 163.46 local
 - 40.85 state aid
 - 22.69 trunk highway and county
 - 227 Total, 204.31 Subtotal local controlled
- 2015 Rehab miles (% of local system)
 - 8.47 reconstruct (4.1%)
 - *4.05 overlay (2.0%)
 - *4.49 sealcoat (2.2%)
 - *7605 pothole repairs (37/mile)



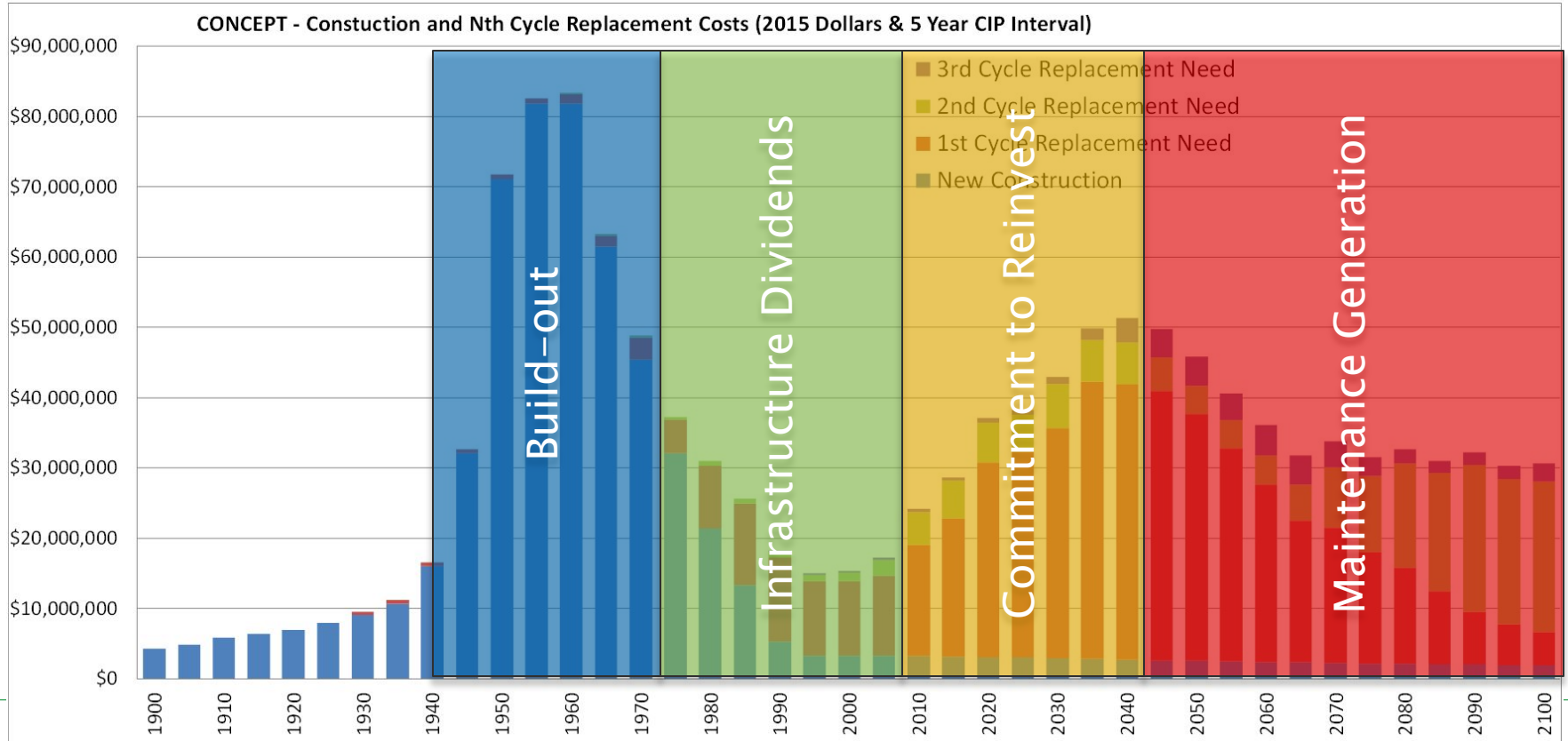
System Overview

- System miles, (2015 additions, % growth)
 - 77.0 Sidewalk (3.0 new, 3.9%)
 - 37.0 Bike lane (0.5 new, 1.35%)
 - 162.5 Storm and sump drain (1.94 new, 1.2%)
- Utility miles (2015 rehab, % rehab)
 - 197.2 Sanitary (4.09, 2.1%)
 - 223.7 Water (1.38, 0.6%)

Concepts and Trends



The CITY of
EDINA

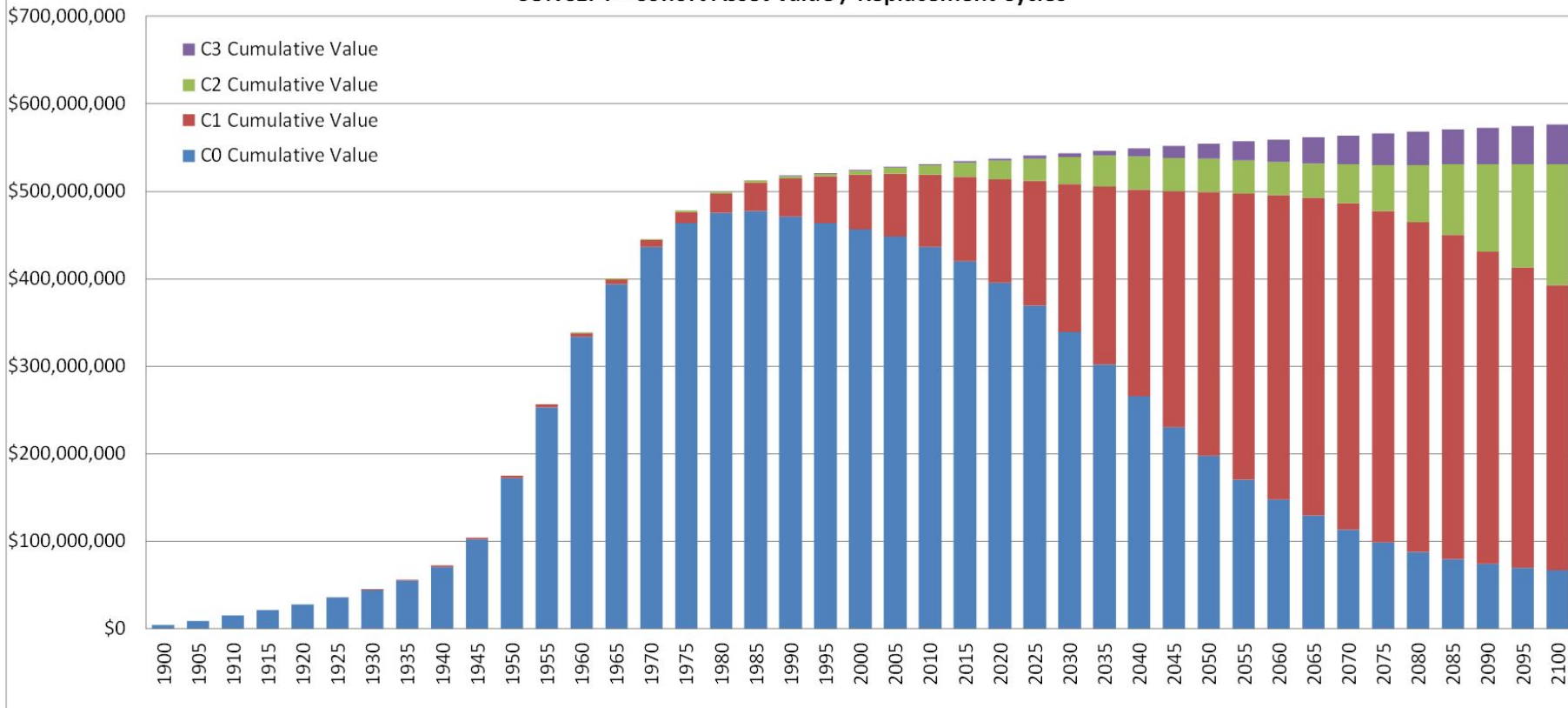


Concepts and Trends



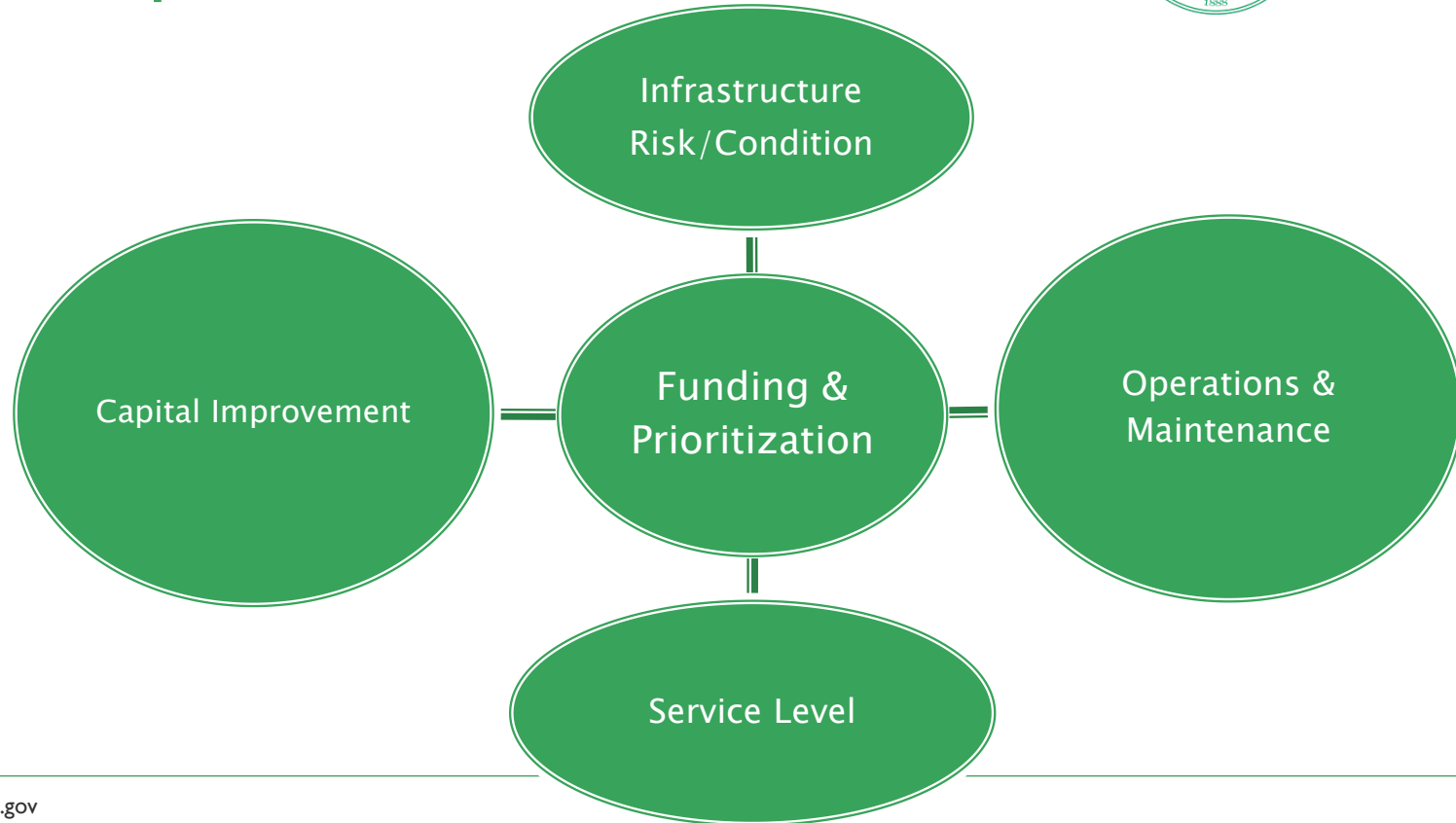
The CITY of
EDINA

CONCEPT - Cohort Asset Value / Replacement Cycles





Concepts and Trends





Concepts and Trends

- Aging infrastructure:
 - Catching up on road rehab, new funding request for new pavement preventative maintenance
 - Longer life span, replacement ramping up, combination of condition assessment and age proxy
- Demand growth with large lot commercial changing to mixed use
- Increased customer service expectation
 - Living streets storm and multimodal, project communications
- Weather dependent industry
 - In house water and sanitary trending down, irrigation trending up.

2015 Accomplishments



The CITY of
EDINA

- Great weather year / catch up on projects delayed by 2014 flood work
- Residential redevelopment and right of way management permit reviews, inspection and enforcement
- Agency partnerships, cooperative agreements and grant funding
- Responsive customer service and communications to ease construction impacts

2015 Accomplishments



The CITY of
EDINA

- Replaced 750 traffic signs
- Installed 2nd Art Wrap
- Repaired 54 water service leaks and 19 water main breaks
- Completed a full leak survey of the watermain system

2016 Initiatives



The CITY of
EDINA

- Southdale Tower Rehab
- SCADA radio upgrades
- Complete generator RICE compliance retro fit of 6 generators on Xcel peak load control program
- Further our use of technology to increase efficiency and responsiveness of our parks and public works staff.



The CITY of
EDINA

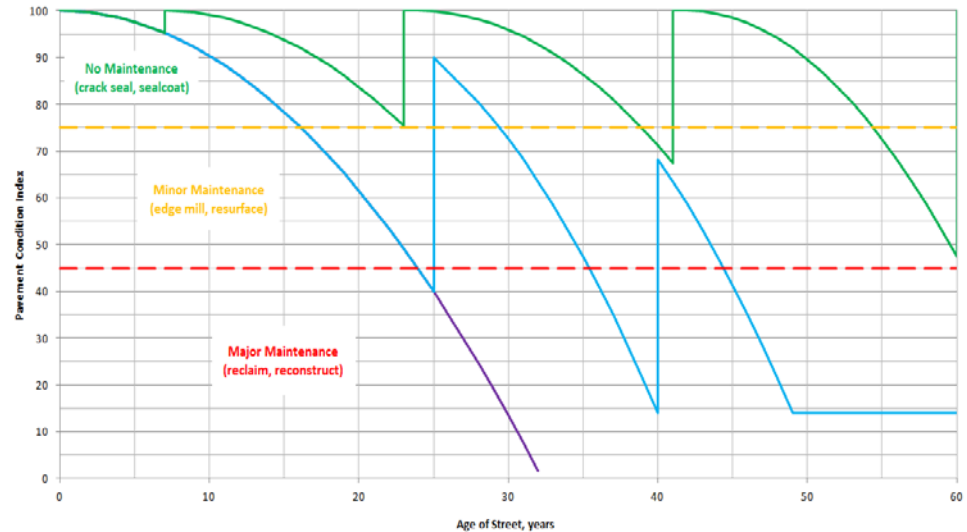
Future Challenges

- Street Maintenance
- Bridges
- GIS and Asset Management
- Living Street Implementation



Streets Deferred Maintenance

- Level of Service
- PCI Goal
- More Frequent Recons = More Assessments





Streets Deferred Maintenance

- Budget deficit for the maintenance program
 - Discussion for local streets only
 - In range of \$200,000 to \$300,000 per year
- Funding Options
 - More general fund revenues
 - Increasing franchise fees
 - Street Improvement Districts (requires legislative action)



Bridge Maintenance & Recon

- Bridge 'anything' is expensive
- Multi-Modal options lacking with current layouts
- Create gaps in our systems – bike / ped
- Maintenance vs. reconstruction
- CIP projects





The CITY of
EDINA

GIS and Asset Management

- GTG Study
- Currently small wins on the utility side
- Just touching the surface of what can be done
Rebecca Foster, Ross Bintner and Public Works



The CITY of
EDINA

GIS NEEDS ASSESSMENT
AND STRATEGIC
IMPLEMENTATION PLAN



GIS and Asset Management

- Infrastructure dashboard – Current project
- CCTV – sanitary sewer inspection records – “hot spots”
- Data Quality – Challenges
 - Building the tool – only as good as the data
 - Collecting data and verifying data – staff & interns, limited
 - Be the last to research an issue
 - continuous improvement



Living Streets

- Represents an increase in service level
 - Public Outreach – Arden, Morningside White Oaks, Birchcrest
- Multi-Modal Transportation Options
 - Sidewalks
 - Bike lanes
- Green infrastructure
 - Storm water treatment
 - Aesthetics
- Are we on track?





Living Streets - Challenges

- Increase in service level
- Modi-Modal transportation options
 - Sidewalks – Plowing expectations
 - Bike lanes – Pavement markings maintenance
- Green infrastructure
 - Storm water treatment – Outside Rate Study
 - Aesthetics (Landscaping) – Funding / Maintenance
- Are we on track considering maintenance?



The CITY of
EDINA

Summary – Infrastructure

- Quality of Life, Health & Safety, and Transportation
- Edina is the city of choice.
- Sound public infrastructure
 With future challenges as system ages

Thank you for your time and input!